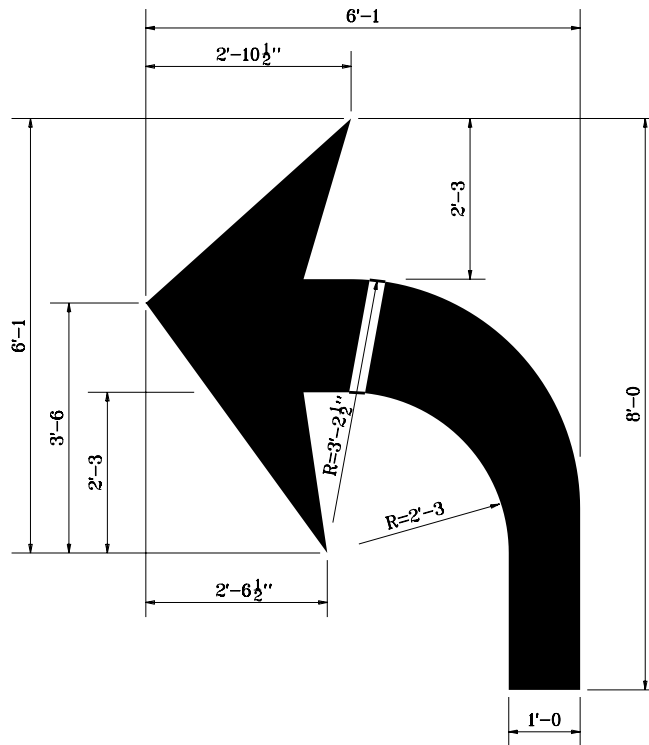
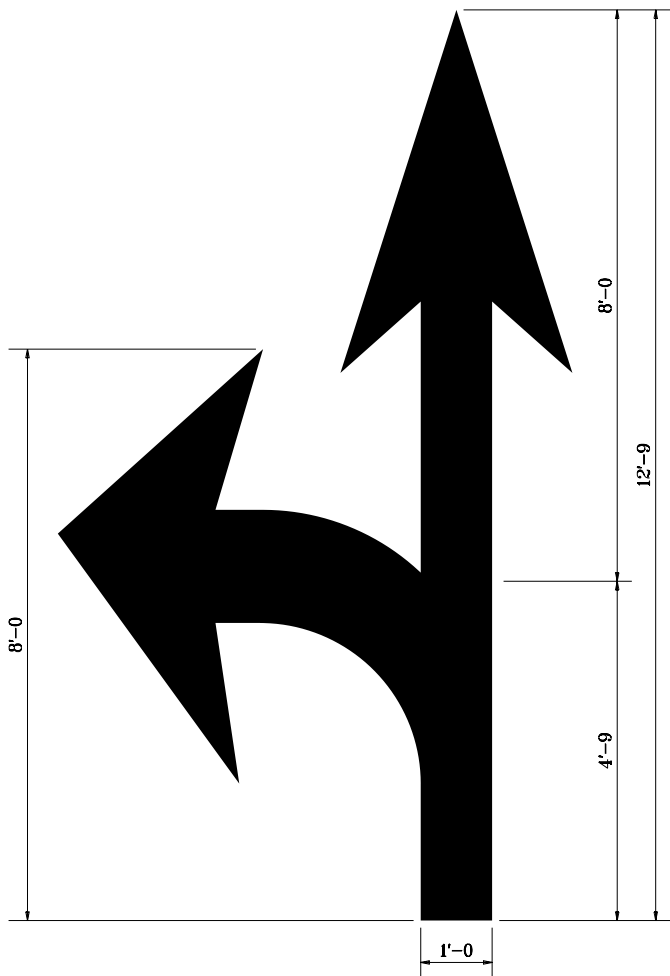


GENERAL NOTES

1. The tip of the lane indication arrow closest to the stop line shall be 20 ft in advance of the nearest edge of the stop line.

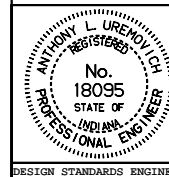


INDIANA DEPARTMENT OF TRANSPORTATION

TRANSVERSE MARKINGS

MARCH 1995

STANDARD DRAWING NO. **E 808-MKPM-02**



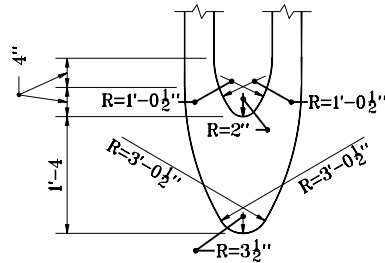
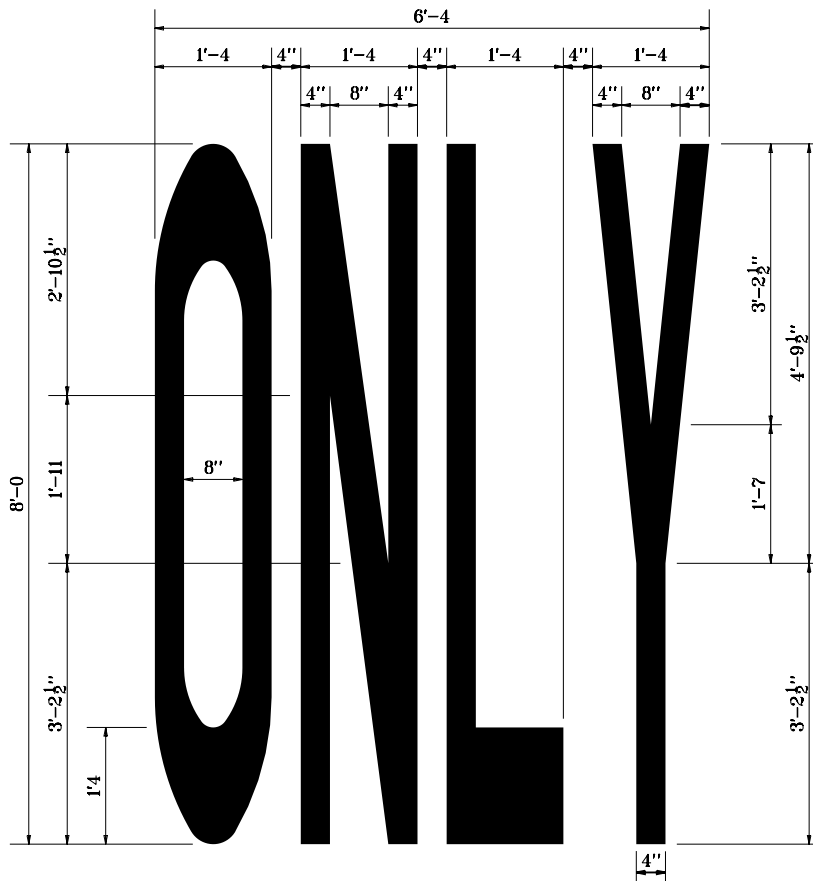
DETAILS PLACED IN THIS FORMAT 7-27-99

/s/ Anthony L. Uremovich 7-27-99
DESIGN STANDARDS ENGINEER DATE

/s/ Firooz Zandi 7-27-99
CHIEF HIGHWAY ENGINEER DATE

DESIGN STANDARDS ENGINEER

ORIGINALLY APPROVED 3-01-95



DETAILS FOR "O"

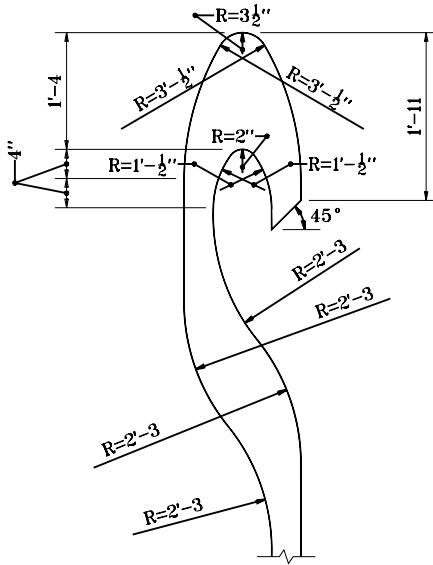
GENERAL NOTES

1. The top edge of the word ONLY shall be located in advance of the back edge of the lane indication arrow, at least 4 times the height of the characters for posted speeds ≤ 45 mph but not more than 10 times the height of the characters for posted speeds > 45 mph.
2. Horizontal strokes are 1'-4 wide. Vertical strokes are 4" wide.

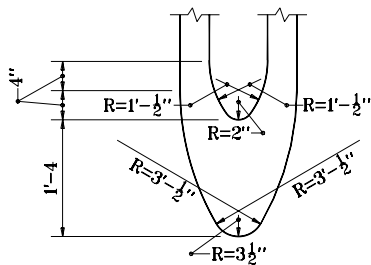
INDIANA DEPARTMENT OF TRANSPORTATION	
TRANSVERSE MARKINGS	
JANUARY 2000	
STANDARD DRAWING NO E 808-MKPM-03	
	/s/ Anthony L. Uremovich 1-03-00 DESIGN STANDARDS ENGINEER DATE
	/s/ Firooz Zandi 1-03-00 CHIEF HIGHWAY ENGINEER DATE
DESIGN STANDARDS ENGINEER	

GENERAL NOTES

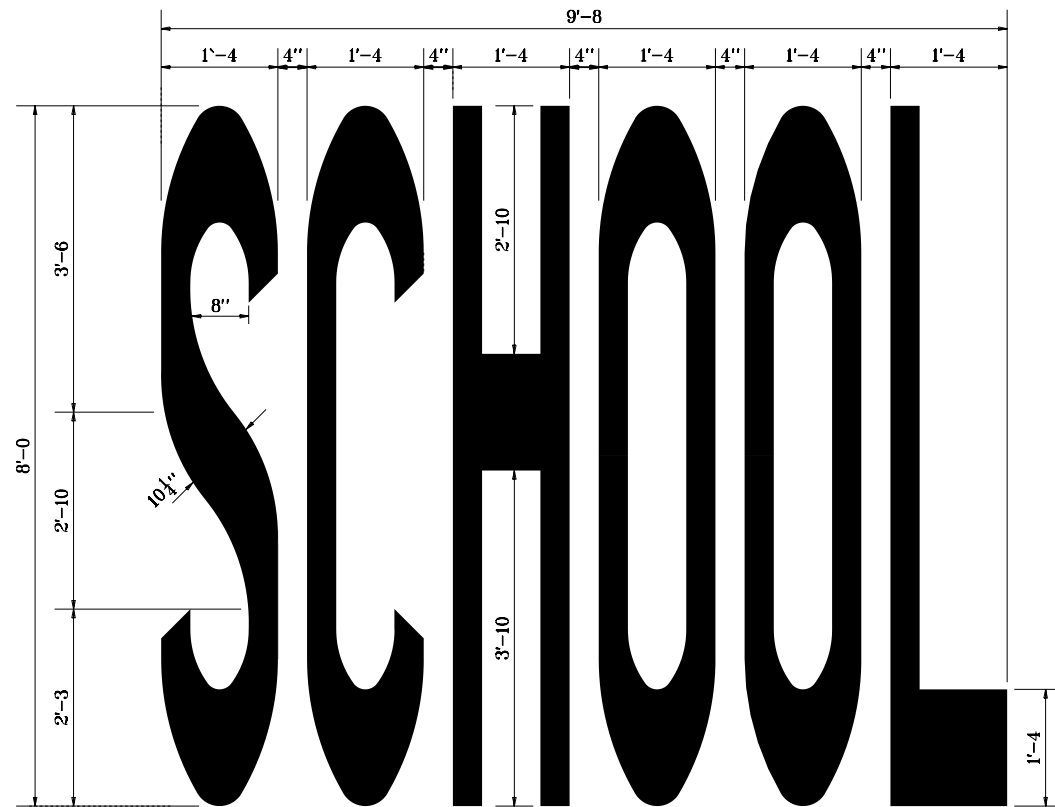
- 1. Horizontal strokes are 1'-4 wide.
- Vertical strokes are 4" wide.



DETAILS FOR "C,G,S"



DETAILS FOR "O"

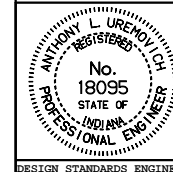


INDIANA DEPARTMENT OF TRANSPORTATION

TRANSVERSE MARKINGS

MARCH 1995

STANDARD DRAWING NOE 808-MKPM-04



DETAILS PLACED IN THIS FORMAT 7-27-99

/s/ Anthony L. Uremovich 7-27-99
DESIGN STANDARDS ENGINEER DATE

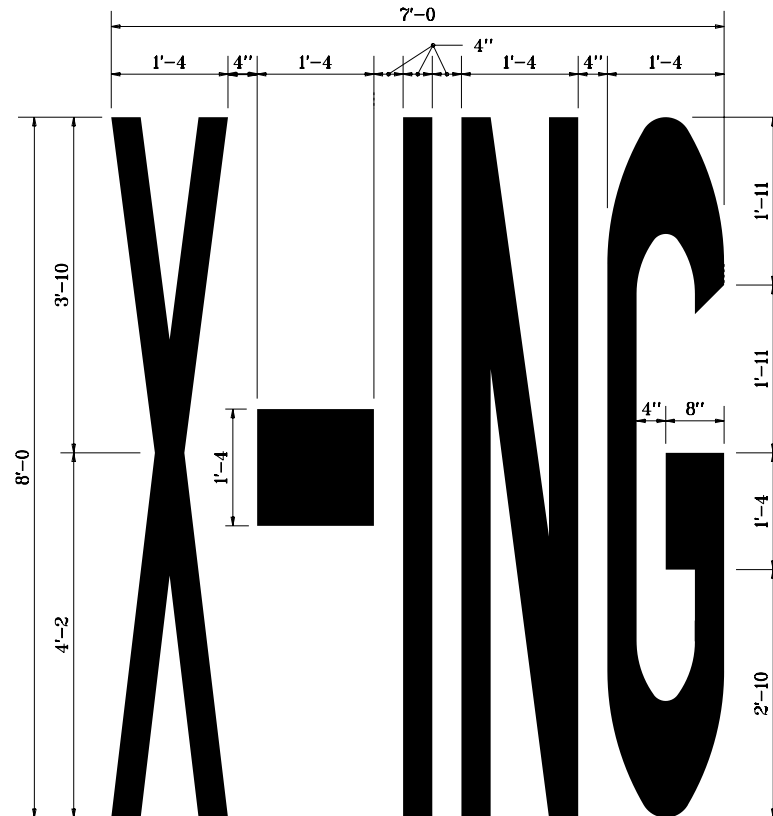
/s/ Firooz Zandi 7-27-99
CHIEF HIGHWAY ENGINEER DATE

DESIGN STANDARDS ENGINEER

ORIGINALLY APPROVED 3-01-95

GENERAL NOTES

1. Horizontal strokes are 1'-4 wide. vertical strokes are 4" wide.
2. See Standard Drawing E 807-MKPM-04 for Details for "G".

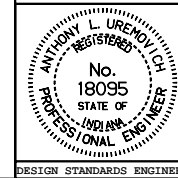


INDIANA DEPARTMENT OF TRANSPORTATION

TRANSVERSE MARKINGS

JANUARY 2000

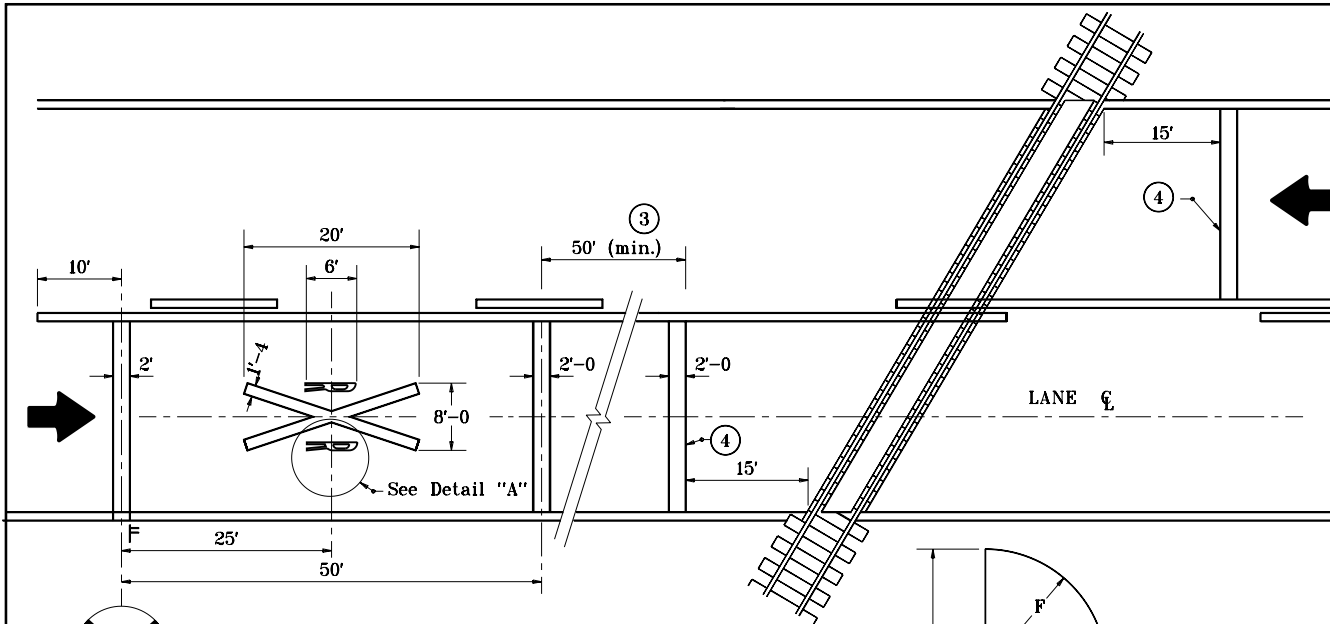
STANDARD DRAWING NO. **E 808-MKPM-05**



/s/ Anthony L. Uremovich 1-03-00
DESIGN STANDARDS ENGINEER DATE

/s/ Firooz Zandi 1-03-00
CHIEF HIGHWAY ENGINEER DATE

DESIGN STANDARDS ENGINEER

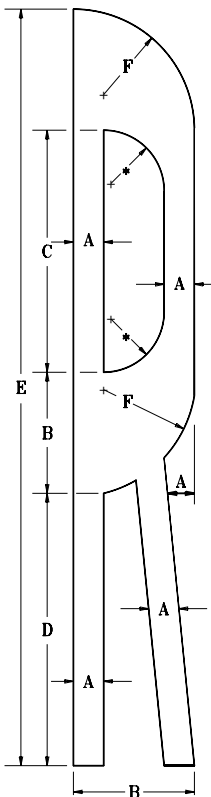


STOPPING SIGHT DISTANCE ③

DESIGN SPEED (mph)	Distance, ft
30	200
35	275
40	325
45	400
50	475
55	575
60	650

- A = 23 3/4"
- B = 11 1/2"
- C = 1'-11"
- D = 2'-1"
- E = 6'-0"
- F = 11 1/2"
- * = 5 3/4" R

DETAIL "A"

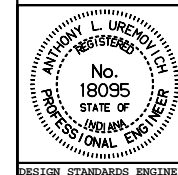


GENERAL NOTES

1. For 2-way left-turn lanes, the center lane shall be discontinued across the railroad crossing and marked as a flush median or as a 1-way left-turn lane.
2. For a multi-lane highway, the transverse lines shall be extended across all approach lanes, and the individual railroad crossing symbols provided in each lane.
- ③ Stopping sight distance in rural areas; variable in urban areas, but not less than 50 ft. See Stopping Sight Distance Table.
- ④ Stop line is approximately 8 ft from gate (if present).

INDIANA DEPARTMENT OF TRANSPORTATION
**PAVEMENT MARKING
 FOR RAILROAD CROSSINGS**
 JANUARY 2000

STANDARD DRAWING NO. **E 808-MKPM-07**



/s/ Anthony L. Uremovich 1-03-00
 DESIGN STANDARDS ENGINEER DATE

/s/ Firooz Zandi 1-03-00
 CHIEF HIGHWAY ENGINEER DATE